



# SECOND EARTH 2.0 [GAIA PROJECT]

PLVS ULTRA



01

SECOND EARTH

# RESHAPING STAGE ECONOMIC MODEL & DEPOSIT BOX AND STAKING BOX



# TOKEN METRICS



SET (Second Earth Token) total supply

**510.1 million**

SET Reshaping stage initial supply

**5.101 million**

SET Revival stage initial supply

**51.01 million**

SET daily mined supply (until first halving)

**370,000**

Gas token: GA (Gaia Token) is the fuel consumed for SET transactions; GA to SET ratio is 1:1

Distribution rules: Daily output is allocated according to mission completions across the entire network

Method to obtain: complete data collection missions to obtain SET, complete action missions to obtain GA; users must deposit tokens daily to receive new missions (Official reward missions will be launched at a later stage without a need to deposit to receive these missions)

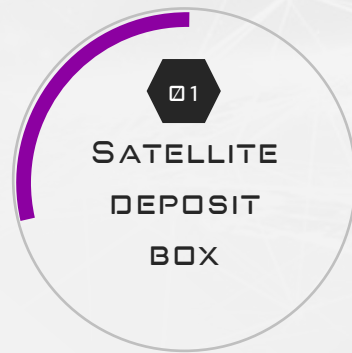
# SET DEPOSIT BOX

01. The user needs to deposit tokens in the deposit box every day to activate and receive new missions. After accepting a mission, and the deposit is deemed legitimate, the rewards will be released after 24 hours.
02. Users can choose to take out the deposited tokens after 24 hours or continue depositing to increase their loyalty ratio (loyalty ratio increases based on the time a user keeps holding and depositing tokens)
03. The number of tokens in the deposit box is  $Xn$  ( $X$  is derived from the Kelly formula based on public chain big data analytics, and  $n$  represents different deposit boxes).

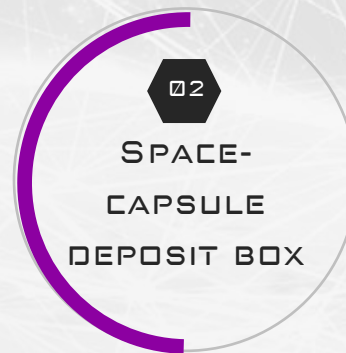


# SET DEPOSIT BOX

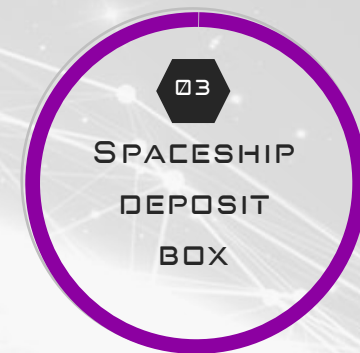
Deposit boxes can be classified among the three levels below:



Satellite deposit box users can receive the GDP income from Satellite deposit box referrals



Space-capsule deposit box users can receive the GDP income from Space-capsule deposit box referrals



Spaceship deposit box users can receive GDP income from all levels

When users reach their income cap and no longer purchase upgrades, or if team growth slows down and the amount of tokens deposited by the user's referral network is shrinking, the POM algorithm will trigger after a certain period of time, and the deposit box will shrink as well.

## DEFINITION

The Staking box is where the reinvested tokens are deposited. All tokens reinvested through the smart contract throughout the upgrade process will enter the Staking Box.

**Every user's personal Staking Box contents will be pooled and shared with all citizens of Second Earth, helping new citizens to boost their income, reduce entry barriers and lower the threshold for role upgrades. The Staking Box will be put as separate referral network below every citizen and slowly will become everybody's largest referral network as the project progresses (GDP generated from the Staking Box will be 0).**

**In order to obtain the Staking Box referral network support, citizens have to adhere to the "balancing rule". This guarantees fairness and protects all citizens' common interest.**

# CANCELLATION



When a user chooses to withdraw their funds from the Staking Box, their level will be automatically downgraded to Junior Explorer, and the tokens in the Staking Box will be released between 3 and 24 months



The release period can be accelerated relative to the ratio for the value of the user's revoked Staking Box to the newly deposited tokens from the lower-level referees



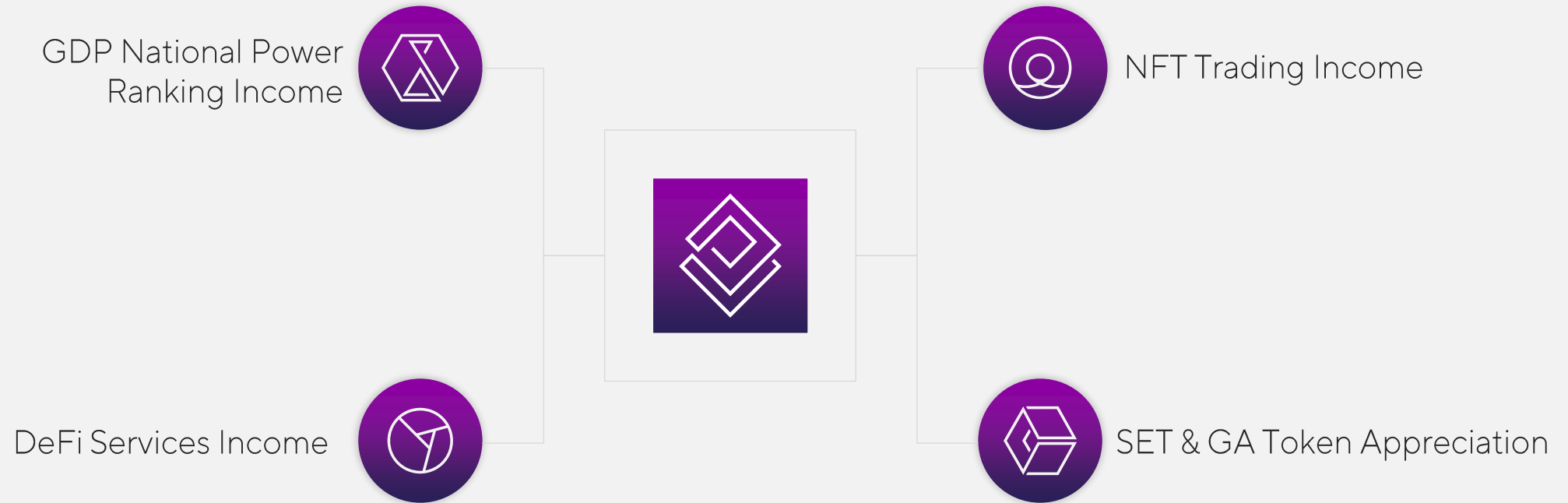
If a user wants to re-upgrade, they need to deposit tokens into the Staking Box again based on the level they want to reach (the amount of pledged tokens required for repurchasing upgrades is based on the original value invested, *not* current token price)

02

SECOND EARTH

# RESHAPING STAGE INCOME

# RESHAPING STAGE INCOME



# RESHAPING STAGE DEFI+ NFT INCOME

## Building Block

Deposit Box Mining & Collateralization

Staking Box Reinvestment Pool

Decentralized Exchange

Mission Mining Credit System

GDP Collateralization

Mission Mining Income ABS

NFT Assets + Auctions

NFT Trading & Collateralization

# RESHAPING STAGE DEFI+NFT INCOME

## Deposit Box mining & collateralization

Citizens (borrowers) can borrow coins stored in other citizens' wallets (lenders) to deposit in their own Deposit Box. Once the loan is taken out, the borrower's Deposit Box will be locked and used as a collateral, and part of the income from the deposit box will be shared to the lenders as the interest.

The Deposit Box can also be used as collateral to borrow USDT whereby citizens can enjoy liquidity without needing to withdraw tokens from their Deposit Box.

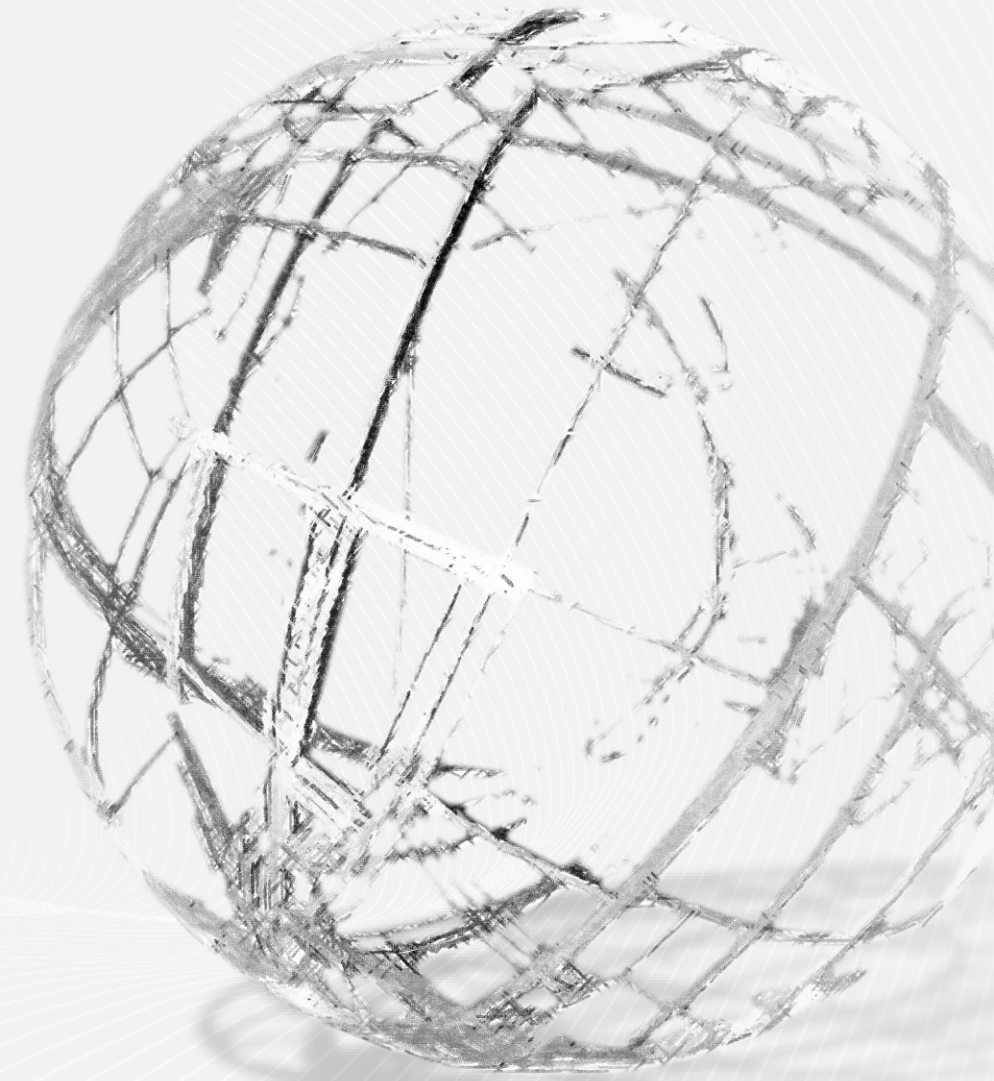
# RESHAPING STAGE DEFI+NFT INCOME

## Staking Box reinvestment pool

Citizens with liquidity needs can lend tokens from Staking Box via smart contracts (Compound model). All Staking Box users share the interest generated from loans and create a new currency: cSET.

cSET is a freely transferable and interest-bearing token representing locked up SET in the Staking Box pool. cSET can become stable coin in future since Staking Box is featured with the pool where stable coin can be produced.

Citizens' reinvested SET in the Staking Box can also be used as a collateral for borrowing USDT or a future SET-native stablecoin.



# RESHAPING STAGE DEFI+NFT INCOME

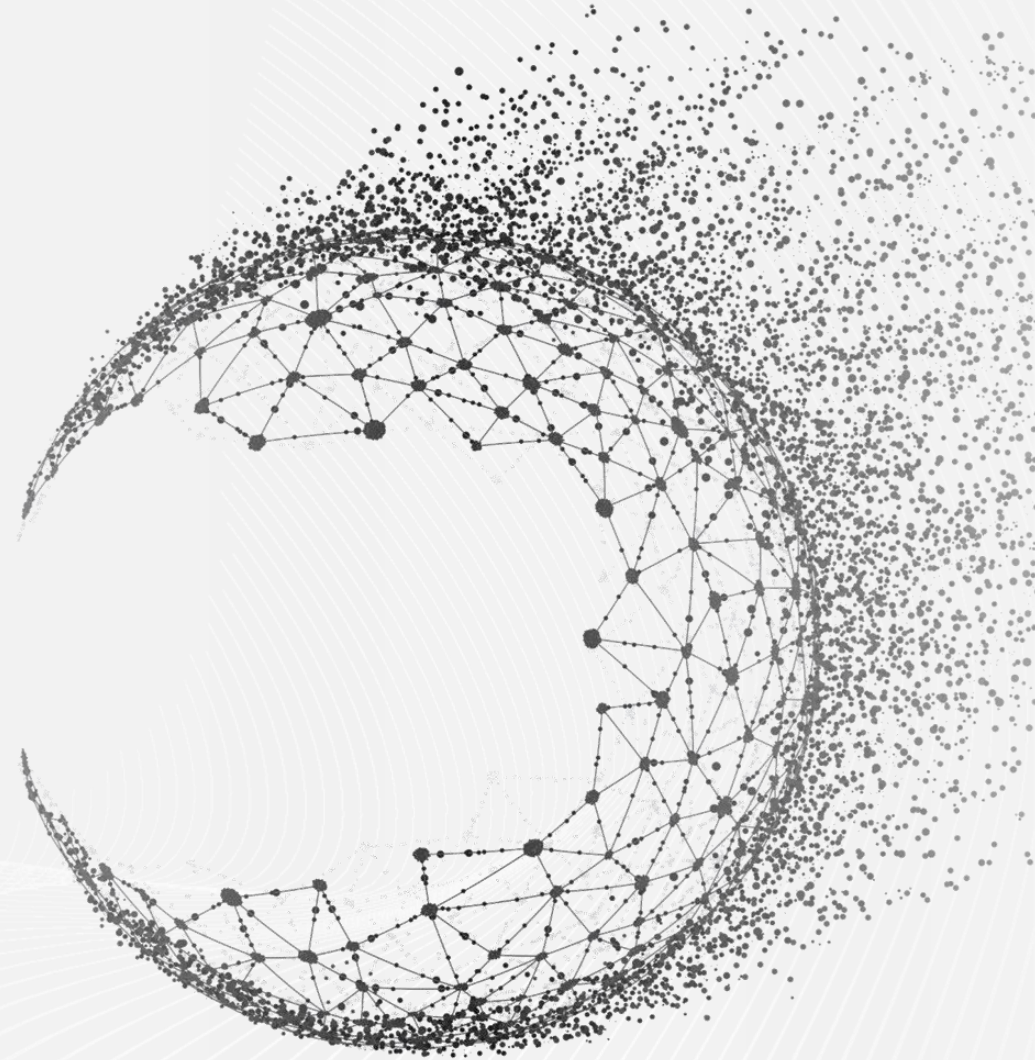
## Decentralized Exchange (DEX)

SET will implement a "one-click currency issuance" function on the SET public chain to allow citizens to create their own tokens and form trading pairs with SET/GA/USDT

One-click currency issuance has certain requirements which citizens need to fulfil in order to issue a token, such as asset collateral, mission credit information, and information about past loans.

## Mission mining credit system

Collateral requirements as well as fees for loans can be adjusted based on a citizen's mission history.



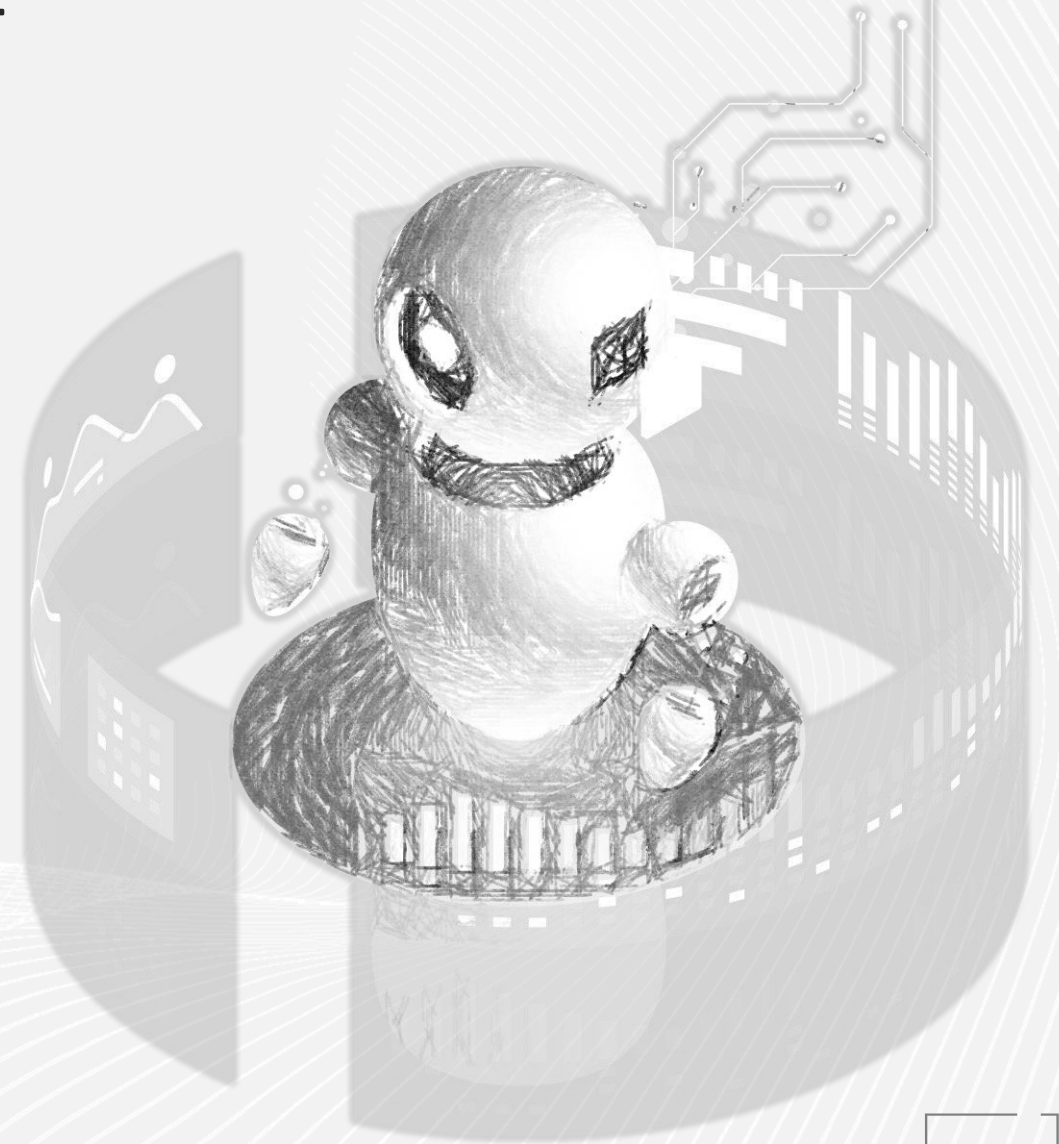
# RESHAPING STAGE DEFI+NFT INCOME

## Referral GDP collateralization

The referral GDP of citizens can be used as collateral for loans, token issuance, and other related activities.

## Mission mining income ABS

Citizens with urgent liquidity needs can sell their mission mining income in advance without having to withdraw SET from their Deposit Box. This means the sale of locked Asset-backed securities (ABS).



# RESHAPING STAGE DEFI+NFT INCOME

## NFT assets & auctions

Every piece of land in the virtual world of Second Earth is unique, which naturally fits the feature of NFT assets.

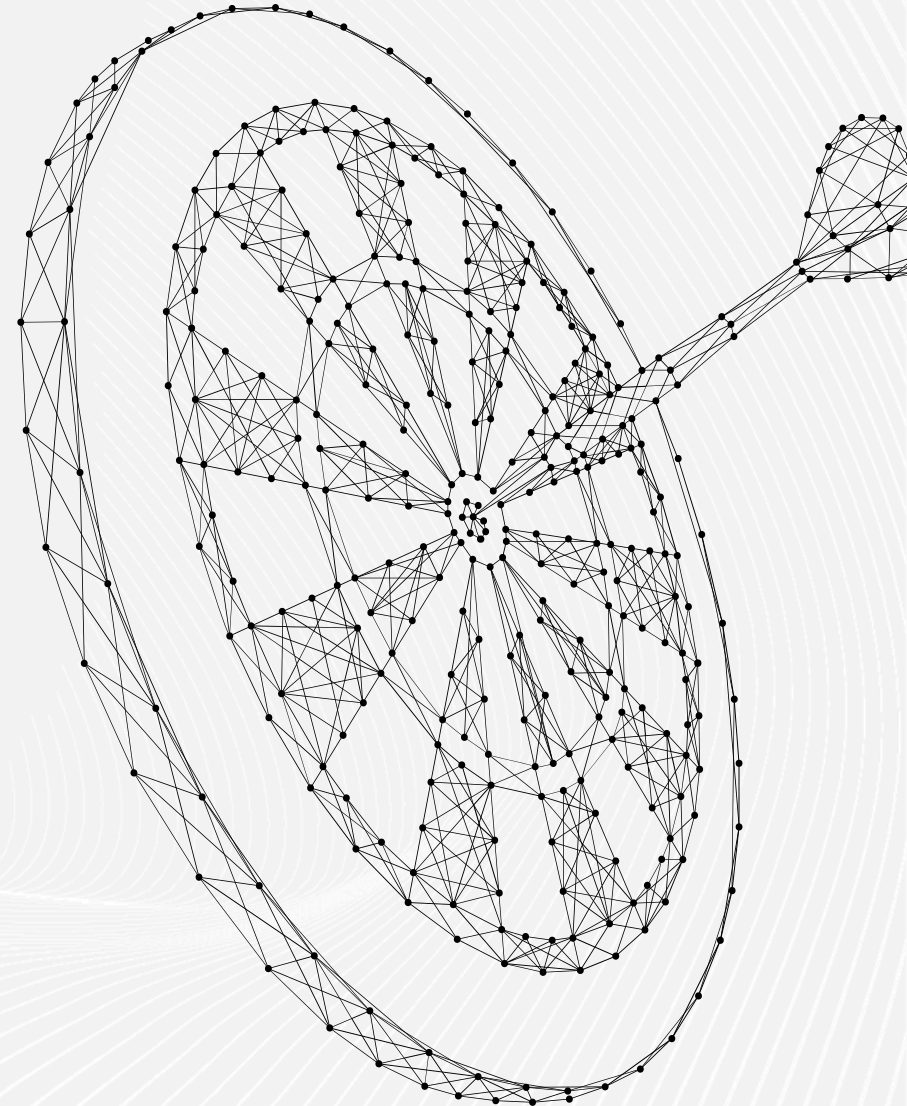
Citizens who acquire land in the form of NFTs can charge fees to merchants who settle on their land, based on NFT asset ownership.

Land can also be auctioned and resold to the highest bidder, thereby establishing a powerful secondary market.

## NFT trading & collateralization

Each commodity or item in the Mirrorworld can be an NFT, and thus be available to be traded on the NFT market.

NFTs can also be used as collateral for loans, which is a creative NFT + DeFi application.



# RESHAPING STAGE DEFI+NFT INCOME

## Business Cases

Hashrate (GDP) Forecast

Decentralized Lottery

Decentralized Derivatives

Automated Investment Strategies

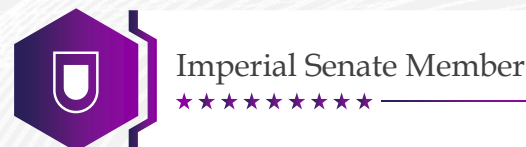
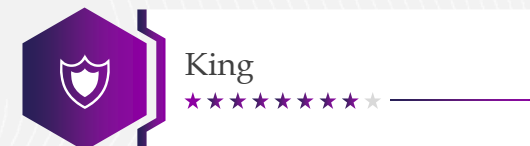
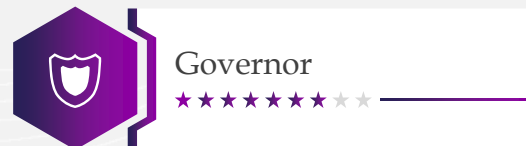
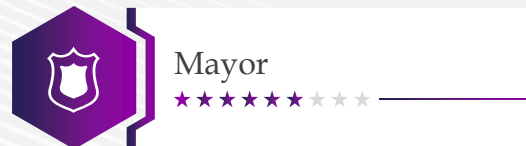
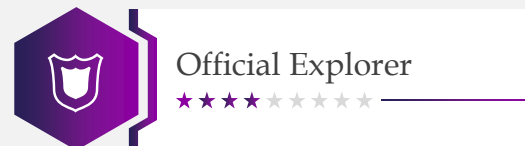
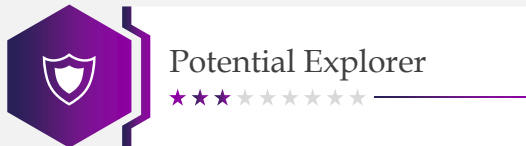
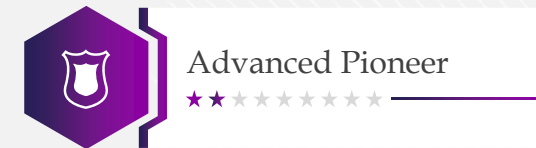
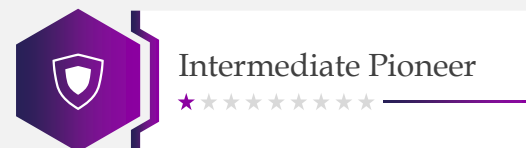
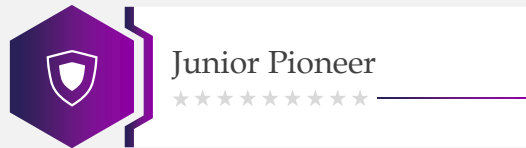
NFT AR/VR In-Game Assets

NFT Scores

....

# RESHAPING STAGE ROLES

Second Earth role levels are divided into the following based on GDP National Strength Index:



03

SECOND EARTH

# STAKING BOX & ROLE UPGRADE



Junior Pioneer

★★★★★★

# JUNIOR PIONEER

## Benefits:

- Receive up to 5x individual GDP income from referral network

## Upgrade qualifications for Intermediate Pioneer:

Referral network GDP reaches at least 5x individual GDP

## Reinvestment upgrade model:

- Method 1: Directly purchase SET and GA for reinvestment
- Method 2: Automatic reinvestment of 50% of daily income, the net GDP income cap multiple will increase at each increasing reinvestment step



# INTERMEDIATE PIONEER

## Benefits:

- Receive up to 10x individual GDP income from referral network
- Official giveaway: 360° VR camera

## Upgrade qualifications for Advanced Pioneer:

Referral network GDP reaches at least 10x individual GDP

## Reinvestment upgrade model:

- Method 1: Directly purchase SET and GA for reinvestment
- Method 2: Automatic reinvestment of 50% of daily income, the net GDP income cap multiple will increase at each increasing reinvestment step



Intermediate Pioneer



# ADVANCED PIONEER



Advanced Pioneer



## Benefits:

- Receive up to 20x individual GDP income from referral network
- Official giveaway: a set of VR glasses

## Upgrade qualifications for Potential Explorer:

Referral network GDP reaches at least 20x individual GDP

## Reinvestment upgrade model:

- Method 1: Directly purchase tokens for reinvestment
- Method 2: Automatic reinvestment of 50% of daily income, the net GDP income cap multiple will increase at each increasing reinvestment step

**Users that have a Satellite Deposit Box and Space-capsule Deposit Box can only become Advanced Pioneer as the cap. Users need to change to the Spaceship Deposit Box to further upgrade**





# POTENTIAL EXPLORER

## Benefits:

- Deposit box capacity is doubled, receive up to 15x individual GDP income from referral network (after deposit box capacity is doubled)
- Official giveaway: high-end VR headset

## Upgrade qualifications for Official Explorer:

Referral network GDP reaches at least 15x individual GDP (after deposit box capacity doubled)

## Reinvestment upgrade model:

- Method 1: Directly purchase tokens for reinvestment
- Method 2: Automatic reinvestment of 50% of daily income, the net GDP income cap multiple will increase at each increasing reinvestment step



# OFFICIAL EXPLORER



Official Explorer



## Benefits:

- Deposit box capacity is doubled, receive up to 25x individual GDP income from referral network (after deposit box capacity is doubled)
- When 102 Explorers reach Official Explorer status, the Explorer competition mechanism will trigger. The top 102 Official Explorers (according to GDP value) will receive a global 5% weighted dividend income
- Official giveaway: high-end PC

## Upgrade qualifications for Deputy Mayor:

Referral network GDP reaches at least 25x individual GDP (after deposit box capacity doubled)

## Reinvestment upgrade model:

- Method 1: Directly purchase SET and GA for reinvestment
- Method 2: Automatic reinvestment of 50% of daily income, the net GDP income cap multiple will increase at each increasing reinvestment step

**When 102 Explorers reach the Official Explorer status, any party can issue missions, and once the merchant registration system is online, the Revival Stage begins. An Official Explorer can participate in project team mission reviews and design an individual reward and punishment mechanism.**





Deputy Mayor

★★★★★★★

# DEPUTY MAYOR

## Benefits:

- Deposit box capacity is tripled, receive up to 30x individual GDP income from referral network (after deposit box capacity is tripled)
- Official giveaway: VR gaming station
- Receive merchant commission share

## Upgrade qualifications for Mayor:

Referral network GDP reaches at least 30x individual GDP (after deposit box capacity tripled)

## Reinvestment upgrade model:

- Method 1: Directly purchase SET and GA for reinvestment
- Method 2: Automatic reinvestment of 50% of daily income, the net GDP income cap multiple will increase at each increasing reinvestment step



# MAYOR

## Benefits:

- Deposit box capacity increases 5-fold, receive up to 30x individual GDP income from referral network (after deposit box capacity is increased)
- Obtain a global 3% weighted dividend
- Obtain 30% commission share from the mission system income in the Revival phase
- Obtain a luxury car, courtesy of Tesla and a set of 720-degree VR panoramic glasses sponsored by Sila

## Upgrade qualifications for Governor:

Referral network GDP reaches at least 30x individual GDP (after deposit box capacity increased 5-fold)

## Reinvestment upgrade model:

- Method 1: Directly purchase SET and GA for reinvestment
- Method 2: Automatic reinvestment of 50% of daily income, the net GDP income cap multiple will increase at each increasing reinvestment step



Mayor





Governor



# GOVERNOR

## Benefits:

- Deposit box capacity increases 5-fold, receive up to 50x individual GDP income from referral network (after deposit box capacity is increased)
- Receive a global 2% weighted dividend
- Obtain a 20% commission share from the mission system income in the Revival phase
- Obtain a luxury watch from Richard Mille

## Upgrade qualifications for King:

Referral network GDP reaches at least 50x individual GDP (after deposit box capacity increased 5-fold)

## Reinvestment upgrade model:

- Method 1: Directly purchase SET and GA for reinvestment
- Method 2: Automatic reinvestment of 50% of daily income, the net GDP income cap multiple will increase at each increasing reinvestment step





King



# KING

## Benefits:

- Deposit box capacity increases 6-fold, receive up to 60x individual GDP income from referral network (after deposit box capacity is increased)
- Receive a 5% share of trading fees from the Second Earth Exchange
- Obtain a plot of luxury real estate

## Upgrade qualifications for Imperial Senate Member :

Referral network GDP reaches at least 60x individual GDP (after deposit box capacity increased 6-fold)

## Reinvestment upgrade model:

- Method 1: Directly purchase SET and GA for reinvestment
- Method 2: Automatic reinvestment of 50% of daily income, the net GDP income cap multiple will increase at each increasing reinvestment step





Imperial Senate Member



# IMPERIAL SENATE MEMBER

## Benefits:

- Deposit box capacity increases 8-fold, receive up to 80x individual GDP income from referral network (after deposit box capacity is increased)
- Members of the Imperial Senate can join the Second Earth development team to participate in project development as well as invest and enjoy a lifetime shareholder position and returns
- Obtain a \$500,000 package of cruises and travel tours in more than 100 countries around the world

## Reinvestment upgrade model:

- Method 1: Directly purchase SET and GA for reinvestment
- Method 2: Automatic reinvestment of 50% of daily income, the net GDP income cap multiple will increase at each increasing reinvestment step



**\$500,000**

# REINVESTMENT UPGRADE



Required  
Total  
Number  
of  
Deposit  
Boxes to  
Upgrade

Level	50,000,000 x N	If the network GDP is 25,000,000 (N=1/2)	If the network GDP is 50,000,000 (N=1)	If the network GDP is 100,000,000 (N=2)
Junior Pioneer	$1 \times \frac{1}{N}$	2	1	0.5
Intermediate Pioneer	$2 \times \frac{1}{N}$	4	2	1
Advanced Pioneer	$4 \times \frac{1}{N}$	8	4	2
Potential Explorer	$5 \times \frac{1}{N}$	10	5	2.5
Official Explorer	$8 \times \frac{1}{N}$	16	8	4
Deputy Mayor	$20 \times \frac{1}{N}$	40	20	10
Mayor	$34 \times \frac{1}{N}$	68	34	17
Governor	$56 \times \frac{1}{N}$	112	56	28
King	$81 \times \frac{1}{N}$	162	81	40.5
Imperial Senate	$143 \times \frac{1}{N}$	286	143	71.5

Note: N = Total GDP / 50,000,000




SECOND EARTH

DEMO

# UPGRADE EXAMPLE

ID:SET12585459657



NAME: **Alice**

SECOND EARTH LEVEL: **Intermediate Pioneer**

DEPOSIT BOX LEVEL: **Spaceship Deposit Box**

SPACESHIP DEPOSIT BOX VALUE: **5000**

ACCORDING TO THE BIG DATA STATISTICAL ALGORITHM AND KELLY'S FORMULA

01/09/2020

Intermediate Explorer Alice's network GDP has reached 10x her personal GDP, and she has qualified to be promoted to Advanced Explorer. The upgrade will be completed by reinvesting executed by a smart contract.  
(Assume that the whole network GDP is 50,000,000)



# UPGRADE EXAMPLE

Alice can choose between two reinvestment methods:

Method 1: Alice directly purchases tokens for reinvestment. When the number of reinvested tokens reaches 2x her deposit box value (= 10,000), she will be promoted to Advanced Pioneer level. This method may be suitable for community leaders whose referral network is growing very fast, so that they can increase their income instantly.

Method 2: 50% of Alice's daily income is automatically reinvested, and her net GDP income cap multiple increases each step with the reinvested amount. When the total reinvestment reaches 2x her deposit box (=10,000), she will be promoted to Advanced Pioneer.

**Once upgraded, the cap on Alice's referral network GDP revenue has changed from 10x to 20x her personal GDP. Alice's maximum total return has changed from 407 SET to 777 SET, and her monthly total return has jumped from 242.20% to 462.20%!**

# STAKING BOX CANCELLATION EXAMPLE

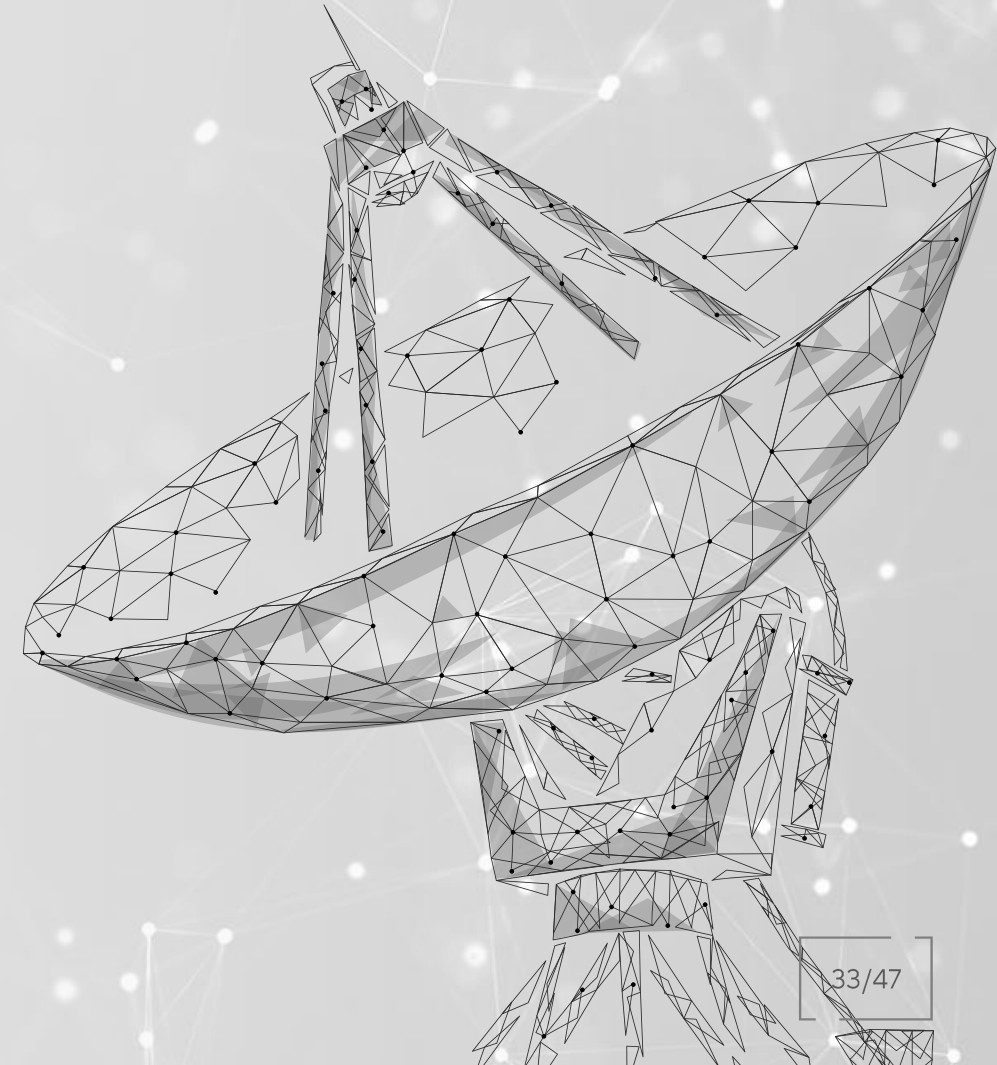
If Alice chooses to withdraw the tokens in her Staking Box in the future, she will be downgraded from an Advanced Pioneer to a Junior Pioneer, and the tokens in the Staking Box will be released in 3 to 24 months based on her referral network growth.

**The release period can be accelerated relative to the ratio of the value of Alice's revoked Staking box to the newly deposited coins of her lower-level affiliates.**

**Scenario 1:** If the token value recently deposited by her lower-level referral network matches the value of Alice's revoked Staking Box, then the release period for tokens in the Staking Box is 3 months.

**Scenario 2:** If the token value recently deposited by her lower-level referral network reaches 50% of the value of Alice's revoked Staking Box, then the release period for tokens in the equity cabin is 12 months.

**Scenario 3:** If there is no tokens recently deposited by Alice's referral network, the release period for tokens in the Staking Box is 24 months.



# RE-UPGRADE EXAMPLE

**If Alice, who has been downgraded to Junior Pioneer after withdrawing all tokens from her Staking Box, chooses to upgrade again, then she needs to start from the Junior Pioneer level and re-upgrade.**

In this case, Alice needs to deposit tokens in the Staking Box again according to the level she wants to reach. The amount of tokens required for repurchasing upgrades is based on the original value invested, not on current token price. If the average price of the initial pledge token is 1 USD, even if the price of the token has risen to 10 USD after she revoked her staked tokens, Alice only needs to reinvest 15000 USD (Including deposit box investment) worth of tokens to complete her journey from Junior Pioneer to Advanced Pioneer.



05

SECOND EARTH

# ECONOMIC MODEL BENEFITS

# 5 MAJOR BENEFITS

Big data analytics and Kelly  
formula chaos algorithm



Deposit box  
smart scaling



Staking Box  
value cycle



Steady token value  
appreciation



World's first V-DeFi + NFT  
Public Chain



# WORLD'S FIRST V-DEFI + NFT PUBLIC CHAIN

Second Earth

By establishing DeFi- and NFT-related smart contracts on the SET chain, Second Earth not only provides decentralized underlying financial services for Second Earth's VR ecosystem, but also puts itself at the forefront of the development trend of the entire blockchain and cryptocurrency industry. DeFi will provide liquidity for locked SET tokens, so that all citizens can benefit and continuous income is obtained.

The basic financial services of Second Earth include deposit box staking & collateralization, decentralized exchanges, hash power collateralization, NFT asset auctions, merchant NFT trading and lending services.

Once the basic functions are built, more services will be independently built through the power of Second Earth's distributed global community.

# POM PUBLIC CHAIN CHAOS-THEORY-BASED ALGORITHM

Second Earth

The chaotic data comprehensive behavior analysis method is based on the big data statistical model developed by Bill Bent and the Kelly formula developed by John Larry Kelly.

According to the big data algorithm and Kelly's formula, Second Earth generates the optimal value of the deposit box in a certain period, so as to maximize the benefits of all citizens of Second Earth and ensure a steady increase of token prices.

The parameters of the algorithm include the number of users, the loyalty ratio, the total circulating supply of tokens, and the price increase.

Kelly formula:  $f = \frac{p*b - (1-p)}{b}$

f = Optimal investment ratio

p=Winning probability

b=Profit-loss ratio

# DEPOSIT BOX SMART SCALING

Second Earth

Second Earth uses three different levels of deposit boxes, so as to lower the entry barriers and enable more people to become explorers of the Second Earth business ecosystem.

According to the Kelly formula and the chaos-theory algorithm, considering the fluctuations in the number of explorers, the number of coins held, and the total circulating supply of SET and GA, the POM algorithm can effectively calculate the increase and reduction ratio of the user's deposit box. This serves the stabilization of token prices and prevents large holders from manipulating the price without affecting their own income.

**Satellite  
deposit box**

**Space-capsule  
deposit box**

**Spaceship  
deposit box**



# STAKING BOX VALUE CYCLE

Second Earth

Explorer leaders need to reinvest daily or purchase SET and GA from other users to expand their personal GDP income cap, in fact this constitutes a form of staking.

If a user does not directly purchase tokens for reinvestment after their network GDP income is capped, but chooses to reinvest through their daily income, then 50% of their daily income will be reinvested in the Staking Box, and the GDP income ratio will increase accordingly. While the referral network continues to expand, the income keeps steadily increasing until the upgrade is complete.

When a user reinvests into the Staking Box, all the Staking Box contents will be pooled and shared with all citizens of Second Earth, helping new citizens to boost their income, reduce entry barriers and lower the threshold for role upgrades.

**If a user chooses to withdraw their tokens in the Staking Box, the tokens will be released in 3-24 months based on the user's referral network growth and the Staking Box value growth of the user's referral network.**

# STEADY TOKEN VALUE APPRECIATION

Second Earth

A greater number of users means a larger reinvestment volume is required, which guarantees the token value will continue to increase. Increasing the withdrawal speed for tokens from the Staking Box requires more new users to join, which helps to avoid large-scale sell-offs. At the same time, Second Earth's business ecosystem continues to grow. All this will ensure coins continue to circulate and SET value steadily increases.

As the number of users increases, the total network GDP expands steadily, which means that users' daily incomes (in tokens) gradually decreases. However, as the number of participants increases, the demand for tokens is higher, and the token price increases.

LOREM IPSUM

# SECOND EARTH FUTURE

With its SET chain and the world's first V-DeFi + NFT financial service bottom layer, Second Earth will provide services for all future applications on Second Earth.

Second Earth aspires to become the world's largest VR entertainment company by 2030.



072026  
BOARDING PASS

NASA National Aeronautics and Space Administration M2M504257604439

BOARDING PASS: FUTURE MARS MISSION

# SECOND EARTH GAIA PROJECT

**LAUNCH SITE**  
CAPE CANAVERAL  
AIR FORCE STATION, FLORIDA  
EARTH

**ARRIVAL SITE**  
JEZERO CRATER,  
MARS

**SCHEDULED DEPARTURE**  
JULY 2026

**AWARD POINTS EARNED** [ 1.1 billion mi /  
1.7 billion km ]



# SECOND EARTH [GAIA PROJECT]

EXPLORE UNHINDERED BY BOUNDARIES.  
VIRTUALLY EVERYTHING IS POSSIBLE!

PLVS ULTRA

