



SECOND EARTH

[GAIA PLAN]

PLVS ULTRA



VIRTUAL REALITY

AND



STARLINK

VR/AR CAPITAL INVESTMENTS



In 2019, the global VR/AR investment totaled **US\$4.1 billion**, an increase of 58.5% year-on-year



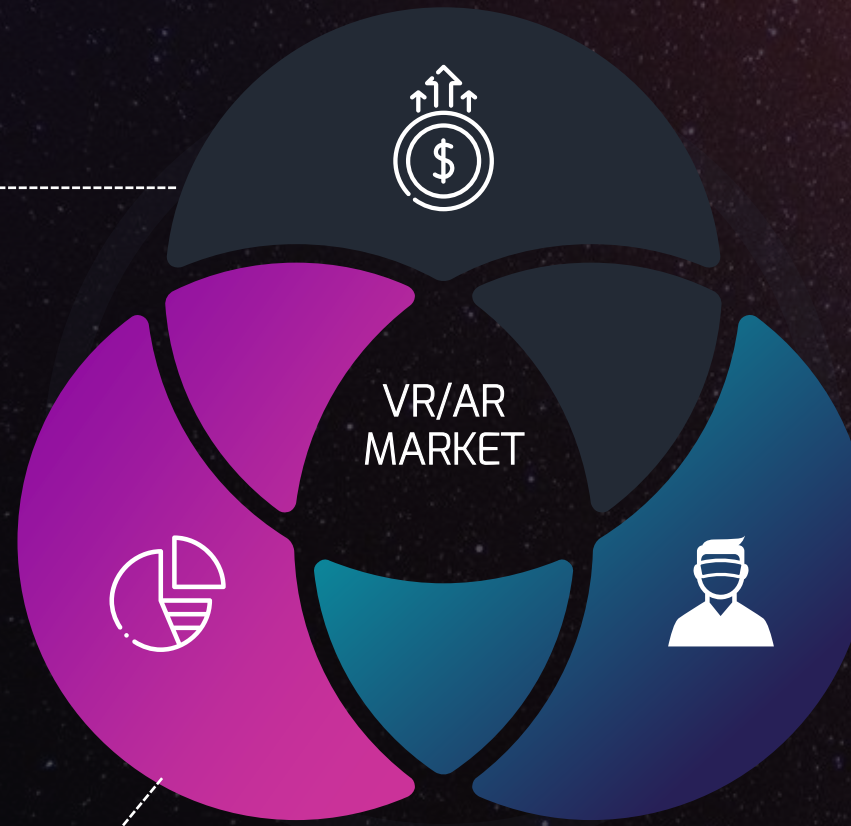
Capital investments in the VR/AR industry are expected to continue to grow at a rapid rate of **30%** from 2020 to 2022

VR/AR MARKET

Total revenue for the global VR/AR industry in 2022 is expected to reach
US\$48.2 billion



The overall market size is expected to reach
\$571.4 billion
in 2025 with a total user member of
440 million



VR headset shipments are expected to reach
36.7 million units
in 2023 and soar to
250 million units
in 2025



VR/AR TECHNOLOGY

**2019 becomes the first year of
"5G" + "Wi-Fi 6" in the
communications industry**

In the 5G era, Cloud VR is expected to promote the large-scale VR technologies and applications. Cloud VR reduces terminal costs and dependence on computing hardware effectively, and promotes using lightweight and mobile terminals.

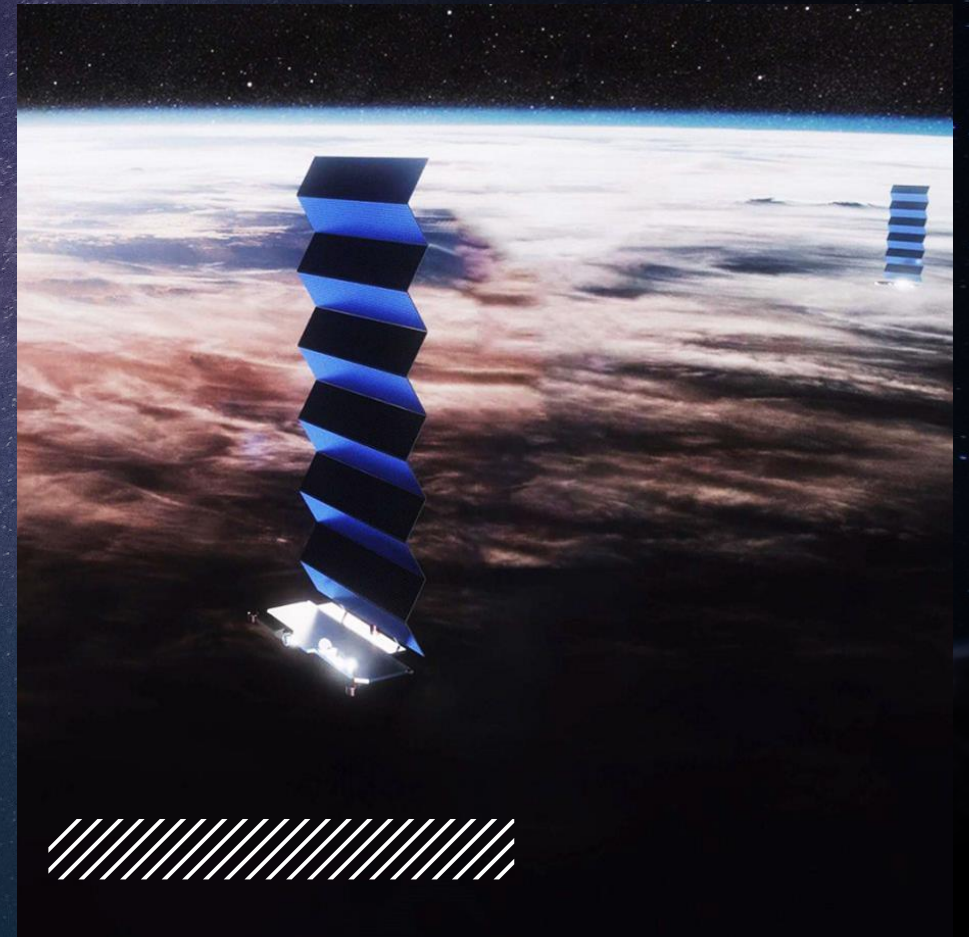


STARLINK

BACKGROUND

Elon Musk first proposed the "Starlink Project" in 2015. According to a planned "60 satellites per rocket", there will be about 1,600 satellites by the end of 2020, more than any country currently possesses.

Starlink is superior in terms of latency, terminal price, traffic costs and coverage. It provides low-cost communication methods for families, and is widely used in specific areas such as dense forests, thick jungles, vast oceans, and other sparsely populated areas.



STARLINK

STAGE #1



Launch about
1,600 satellites
and provide "Starlink" services
to the United States and
Canada in 2020.

STAGE #2



Launch
2,825 satellites
to complete the global
network, with a communication
capacity of 1Gbps and a latency
of less than 25ms.

STAGE #3



Launch
7,518 satellites
to form a constellation that
provides satellite-based high-
speed Internet to the entire world.

VR/AR INDUSTRY PAIN POINTS



Virtual reality technologies only used in simple use cases

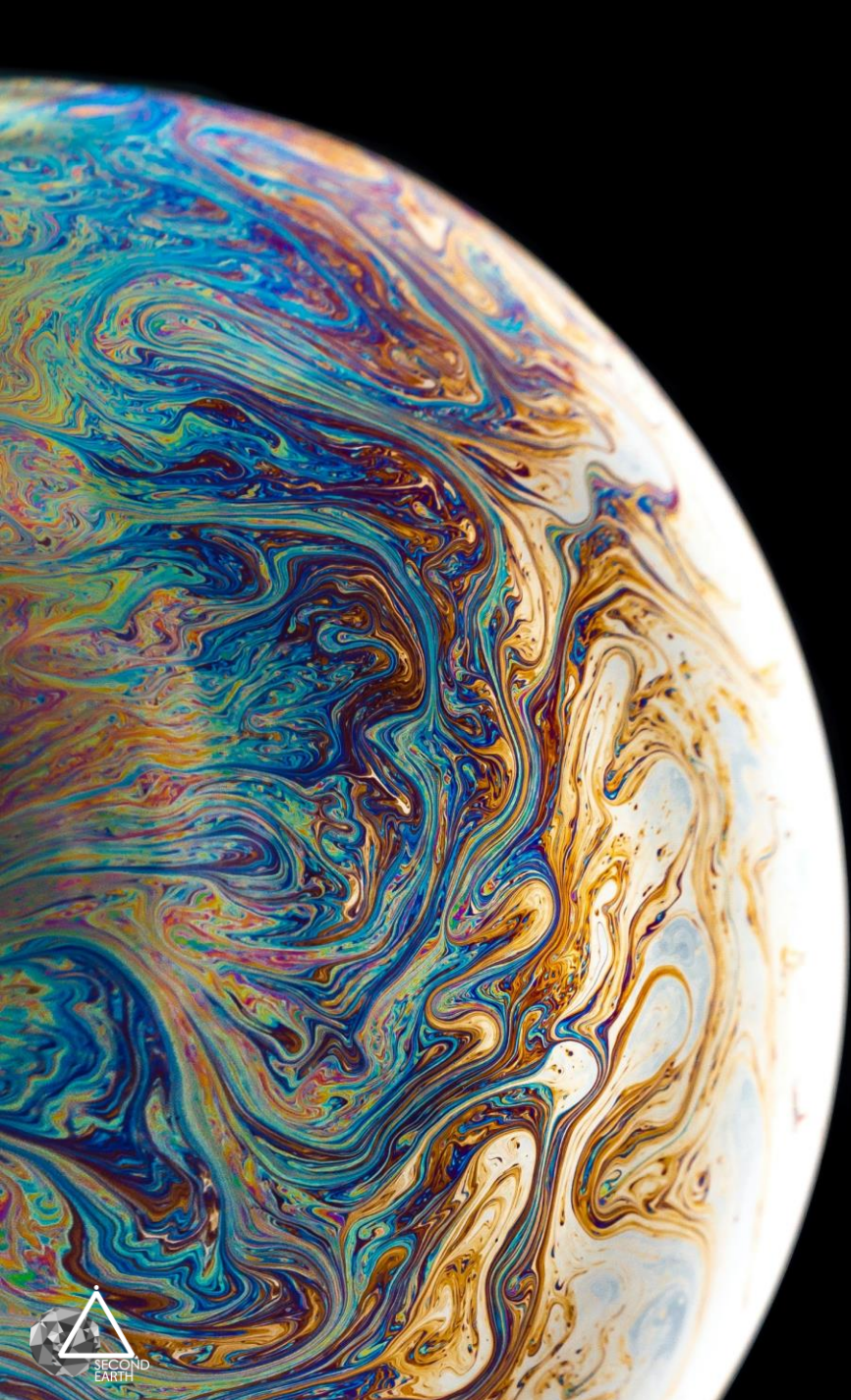


Limited data sources for AR/VR modelling



Existing network bandwidth, latency and coverage limits





SECOND EARTH PROJECT



SECOND EARTH DEFINITION

Second Earth, also known as the Gaia Project, originates from the famous futurist Kevin Kelly's concept of the

“MIRRORED WORLD”

This concept will be realized by combining VR/AR technology, blockchain, artificial intelligence, and the Starlink global communication network.



SECOND EARTH MISSION

Second Earth is the first interactive virtual reality platform to introduce a cryptocurrency incentive mechanism. Using Starlink as the network base infrastructure and introducing a digital currency incentive mechanism, it solves the pain points from a lack of VR/AR modeling data and network data transmissions.

Second Earth allows everyone to get tickets to become citizens in this new virtual world. Everyone can participate in constructing this virtual ecosystem, choose their own territory, and

BECOME A MASTER OF SECOND EARTH!



SECOND EARTH INNOVATIONS

The world's first instance combining cryptocurrency and virtual reality experiences

Integrating blockchain and virtual reality will significantly accelerate the evolution of this mirrored world and the cryptocurrency incentive mechanisms will encourage the average user to collect VR modeling data.



SECOND EARTH INNOVATIONS



New mission mode

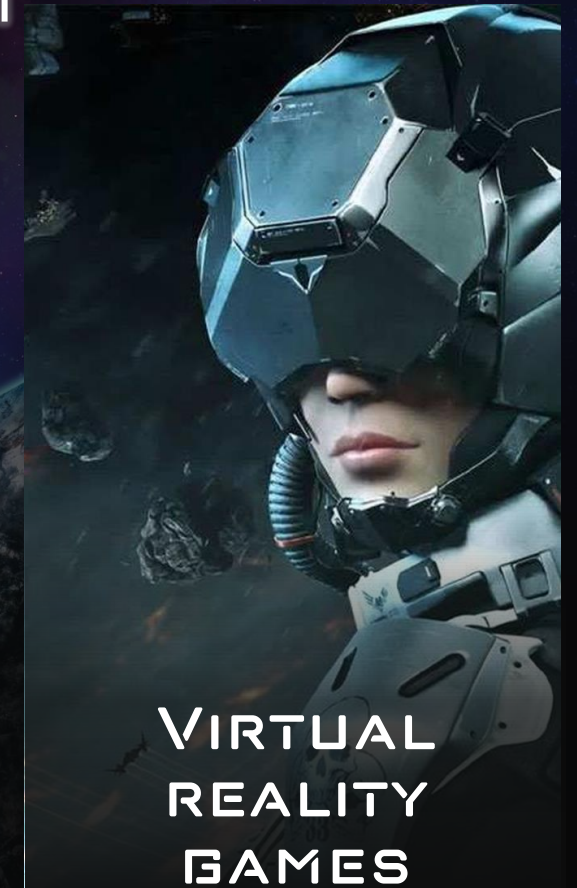
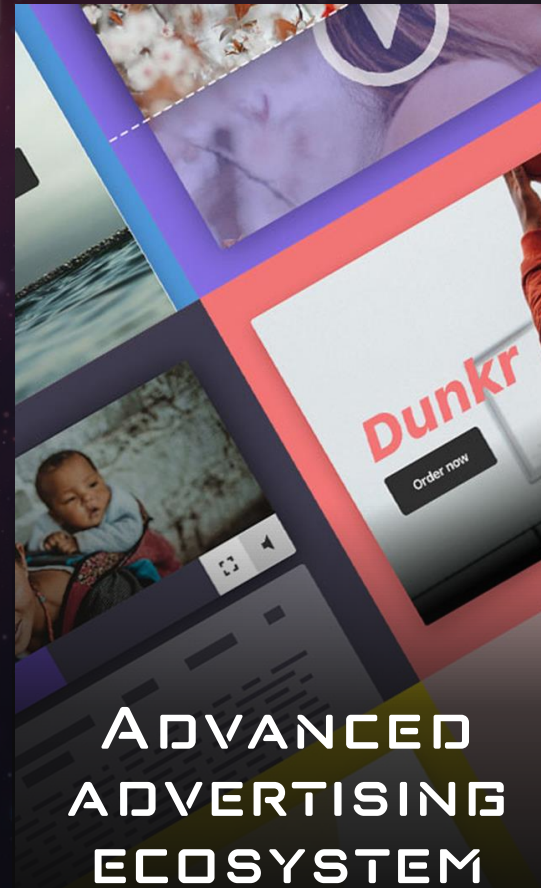
The new mission mode allows Pioneers to assist Explorers (owners of virtual territory) to complete exploring the physical world.

POM consensus mechanism

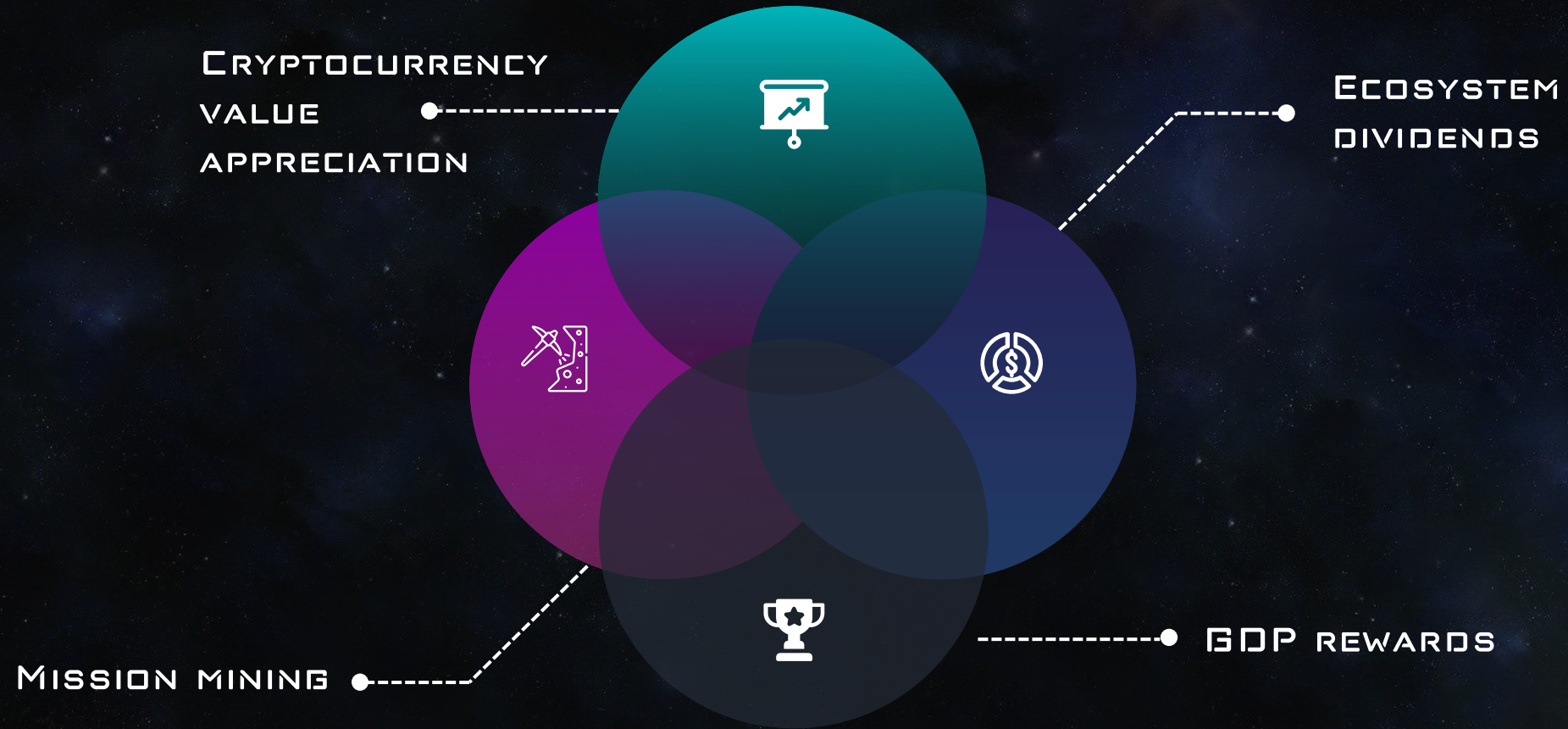


M stands for **Media, Message, Memory and Mission**. The unique consensus algorithm of Second Earth uses these four qualities to evaluate each participant's contribution to the ecosystem.

SECOND EARTH APPLICATION SCENARIOS



SECOND EARTH 4 BENEFITS





SECOND EARTH: NOAH'S LANDING



ROLES IN NOAH'S LANDING

ROLES: PIONEER AND EXPLORER NOAH

PIONEER REQUIREMENTS: ANY USER WHO OWNS A MOBILE PHONE OR PC.

EXPLORER NOAH REQUIREMENTS: MORE THAN **100** PIONEERS NEED TO BE RECRUITED AND **5000** USDT MUST BE DEPOSITED TO OBTAIN THE RIGHT TO SELECT ANY TERRITORY ON TERRA-2 [SECOND EARTH'S VIRTUAL WORLD].

Notes 1. If the Explorer recruitment requirements are not met, the respective Explorer Noah's qualification will be invalidated, and the chosen territory will be unlocked.

Note 2. 102 Explorer Noahs will be recruited in the early stage of the Second Earth project to pre-purchase their preferred virtual territories, and later virtual territory purchases will be available to all users.

CONTRIBUTION VALUE

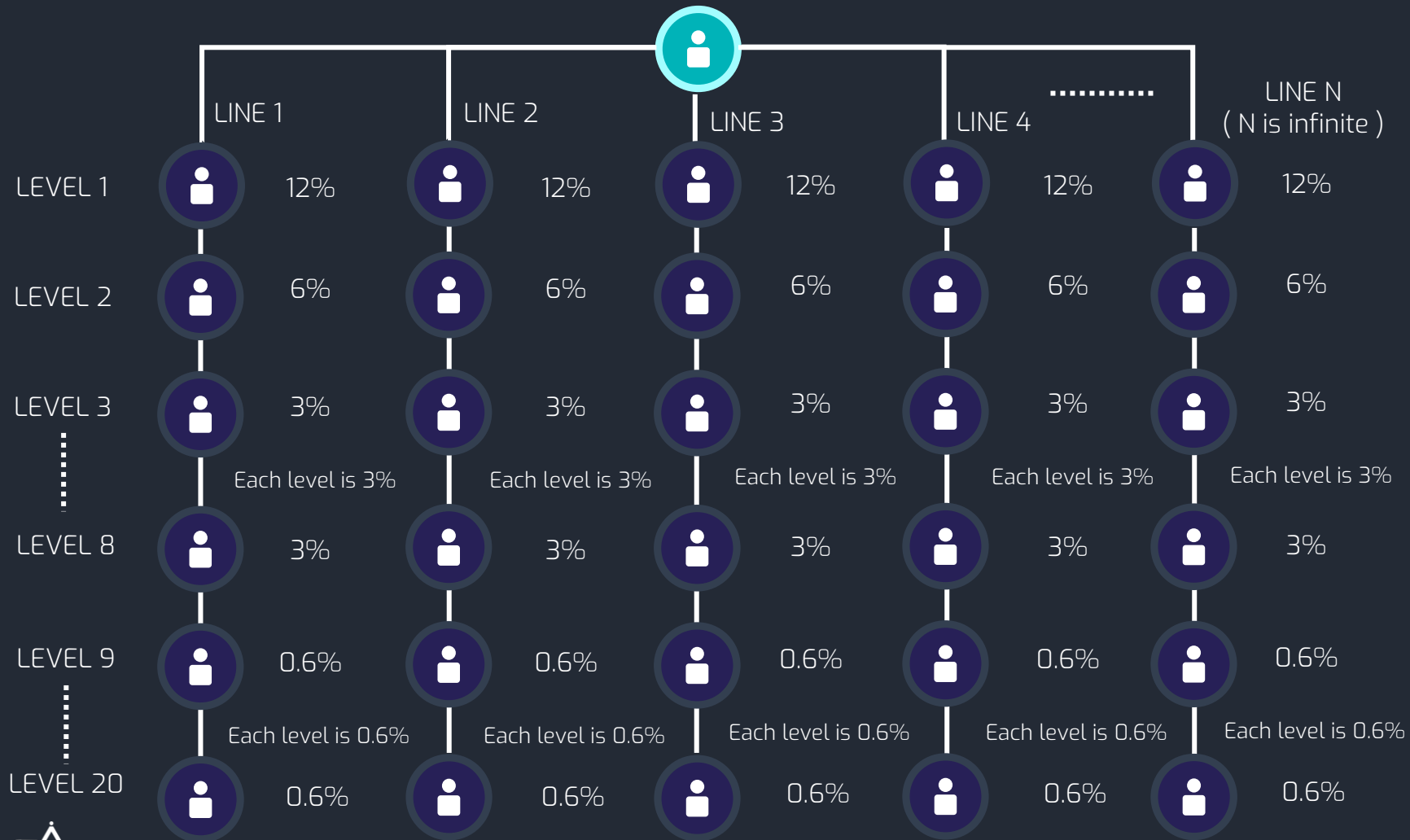
Users obtain contribution values according to daily completed missions in Noah's landing, and purchases of SET tokens with the contribution values acquired during this stage.

Subscription quota (of SET) = individual network contribution value / total network contribution × total amount at the initial Reshaping stage × 0.2USDT

Note: If the subscription quota is less than 5000USDT, any excess funds will be returned; if the subscription quota is greater than 5000USDT, any excess balance can be transferred to another user or purchased by themselves. If the subscription quota is not used within two days, it will be automatically burned, thereby reducing circulation.



CONTRIBUTION VALUE



CONTRIBUTION VALUE REFERRAL NETWORK INCOME

Users can have an unlimited number of referrals. The first referral level gives the referrer 12%, the second level 6%, the 3rd-8th levels 3%, the 9th-20th levels 0.6% of the referred person's income.



VR CONFERENCE

- Noah's landing opens the official pre-sales for VR equipment.
- After the number of pre-sold VR devices reaches 10,000 units, Second Earth's first online VR conference will be launched.
- VR equipment revenue is consistent with the original contribution value referral network and promotion reward system.



SECOND EARTH: RESHAPING



ECONOMIC MODEL IN RESHAPING

Maximum SET (Second Earth Token) supply: **510.1 million**

Circulating supply at the start of the Reshaping : **5.101 million SET**

Circulating supply at the start of the Revival : **51.01 million SET**

Daily mined tokens: **370,000 SET**

Gas token: GA (Gaia Token) is the fuel consumed for SET transactions; the ratio of GA to SET is **1:1**

Distribution rules: Daily mined tokens are allocated according to the mission completions across the entire network

Methods to obtain SET: Complete data collection missions to obtain SET, complete action missions to obtain GA. SET and GA must be deposited daily to receive new missions. (Official reward missions will be launched at a later stage, and there is no need to deposit SET or GA to receive these missions)



MISSION MINING MECHANISMS

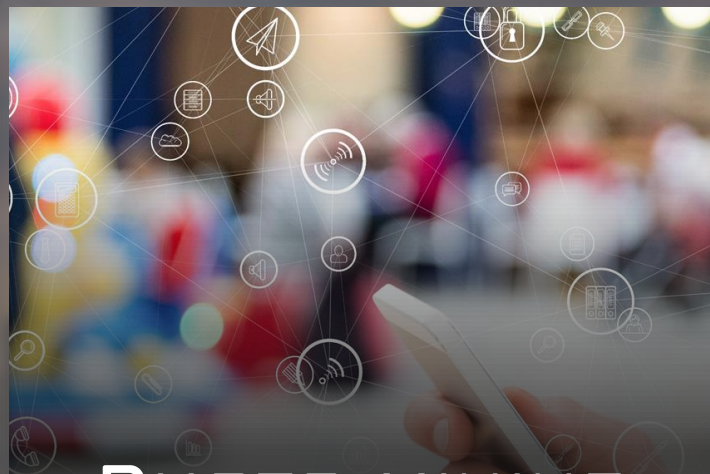


PHOTO MINING

You can earn virtual world GDP (hashpower) by taking photos and uploading them every day, and you will receive your daily SET mining income according to your GDP compared to the entire network GDP.



ACTION MINING

You can earn GA by completing offline action missions every day and uploading credentials.

370,000 SET (and a comparable amount of GA) enter the mining pool every day. If less than enough missions are completed, those uncompleted missions are offered to the entire community as global reward missions. If those missions are still not completed, the remaining tokens are automatically burned.

DEPOSIT BOX

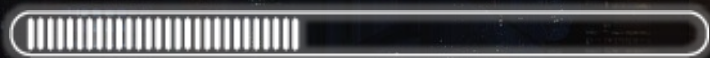
- **The user needs to deposit tokens in the deposit box every day to activate and receive new missions. After accepting the mission, the deposit is deemed effective, and the rewards will be released after 24 hours.**
- **Users can choose to take out the deposited tokens after 24 hours or choose to continue depositing to increase their loyalty ratio (the loyalty ratio increases according to the time a user stays in the project)**
- **The numbers of tokens in the deposit box are represented by X_n (X is derived randomly from the public chain, and n means different deposit box level)**

DEPOSIT BOX

Deposit boxes can be classified into the three levels as below



SATELLITE DEPOSIT
BOX



SPACE-CAPSULE DEPOSIT
BOX



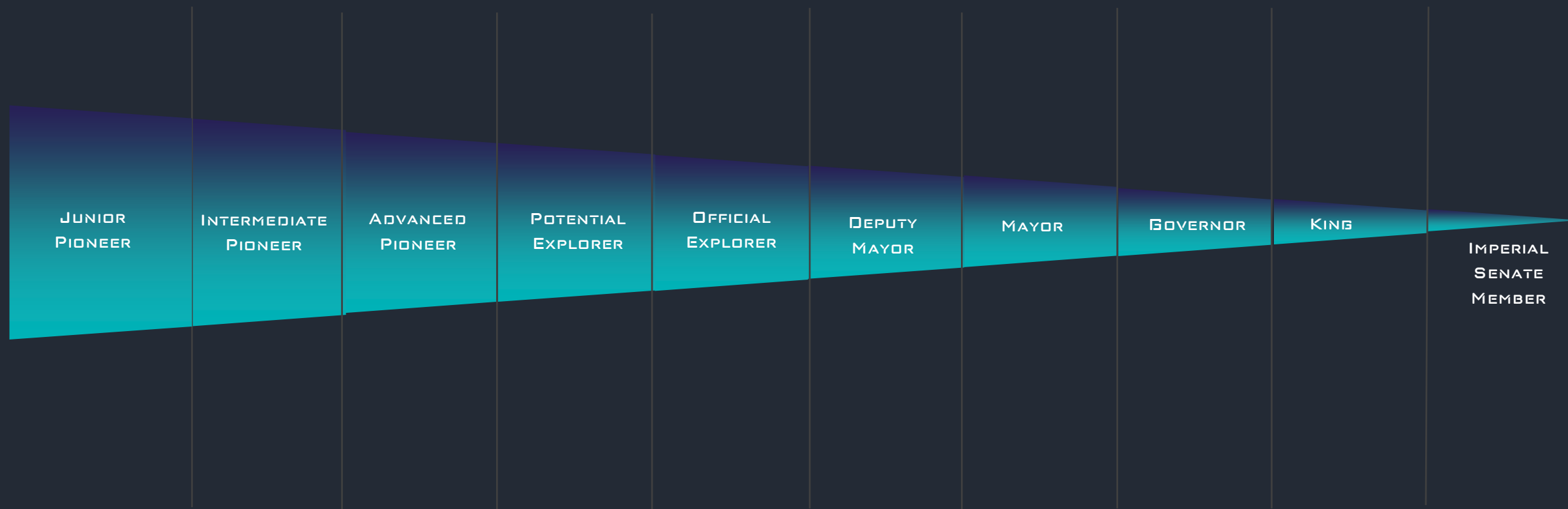
SPACESHIP DEPOSIT
BOX



Satellite deposit box users can receive a GDP share of their network's Satellite deposit box referrals. Space-capsule deposit box users can get a GDP share of their network's Satellite deposit box and Space-capsule deposit box referrals. Spaceship deposit box users can receive a GDP share of all deposit box referrals.

ROLES IN RESHAPING

According to the GDP national power ranking, the role levels are divided into:



ROLES IN RESHAPING



Any user who owns a mobile phone or PC

JUNIOR PIONEER

ROLES IN RESHAPING



INTERMEDIATE PIONEER

The role requirements and income information for Intermediate Pioneer will be shared to the pending Explorer Noah in advance, and will be available to everyone as soon as Reshaping stage launches

BENEFITS

Official giveaway: 360° VR camera



ROLES IN RESHAPING



ADVANCED
PIONEER

The role requirements and income information for Advanced Pioneer will be shared to the pending Explorer Noah in advance, and will be available to everyone as soon as Reshaping stage launches

BENEFITS

Official giveaway: a set of VR glasses



ROLES IN RESHAPING



The role requirements and income information for Potential Explorer will be shared to the pending Explorer Noah in advance, and will be available to everyone as soon as Reshaping stage launches

BENEFITS

Official giveaway: HTC Cosmos high-end VR headset



POTENTIAL EXPLORER



ROLES IN RESHAPING



The role requirements and income information for Official Explorer will be shared to the pending Explorer Noah in advance, and will be available to everyone as soon as Reshaping stage launches

BENEFITS

1. Official giveaway: high-end PC



OFFICIAL
EXPLORER



ROLES IN RESHAPING



DEPUTY
MAYOR

The role requirements and income information for Deputy Mayor will be shared to the pending Explorer Noah in advance, and will be available to everyone as soon as Reshaping stage launches

BENEFITS

Official giveaway: VR motion simulator



ROLES IN RESHAPING



MAYOR

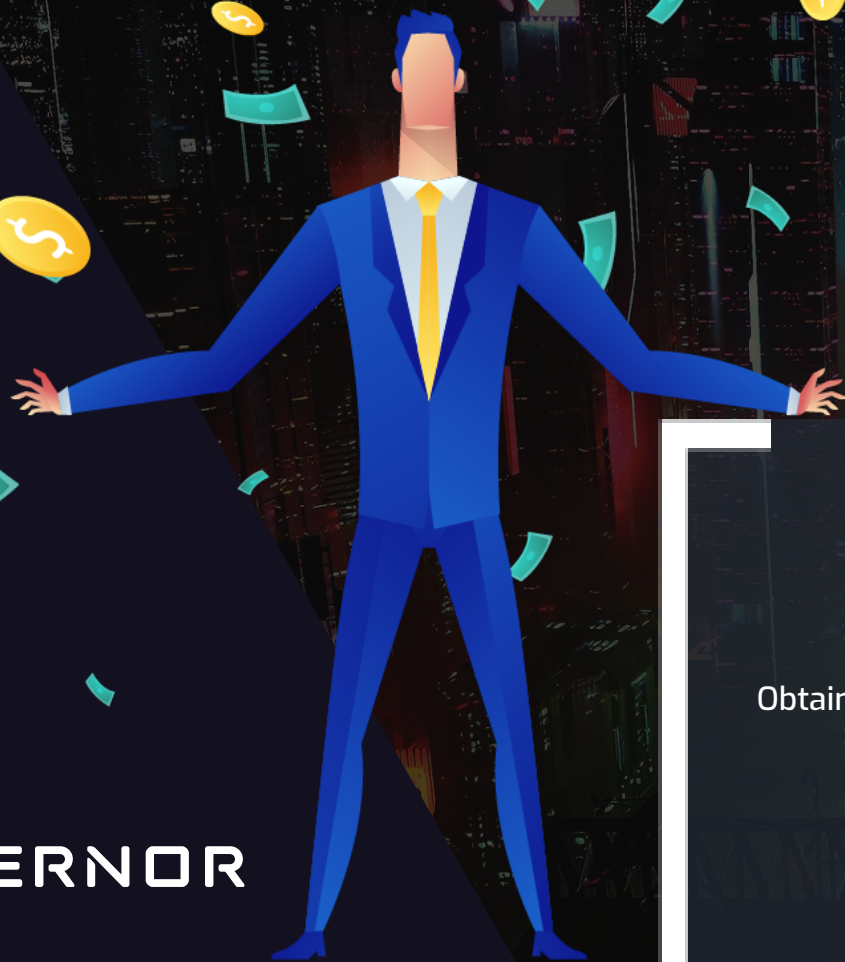
The role requirements and income information for Mayor will be shared to the pending Explorer Noah in advance, and will be available to everyone as soon as Reshaping stage launches

BENEFITS

Obtain a Tesla-sponsored luxury car and a set of 720-degree VR panoramic glasses sponsored by Sila



ROLES IN RESHAPING



The role requirements and income information for Governor will be shared to the pending Explorer Noah in advance, and will be available to everyone as soon as Reshaping stage launches

BENEFITS

Obtain a luxury watch Richard Mille



GOVERNOR

ROLES IN RESHAPING



KING

The role requirements and income information for King will be shared to the pending Explorer Noah in advance, and will be available to everyone as soon as Reshaping stage launches

BENEFITS

Receive a piece of luxury real estate



ROLES IN RESHAPING



IMPERIAL
SENATE
MEMBER

The role requirements and income information for Imperial Senate Member will be shared to the pending Explorer Noah in advance, and will be available to everyone as soon as Reshaping stage launches

BENEFITS

Members of the Federal Council can join the Second Earth development team to influence project development as well as invest and enjoy a lifetime shareholder position and returns;

Obtain a package worth \$500,000 worth of cruises and travel tours in more than 100 countries around the world



ROLES IN RESHAPING



Users upgrade and obtain benefits by pledging tokens.

If team growth slows down and the currency amount is gradually reduced, the POM algorithm will take effect after a certain period of time, and the deposit box will shrink.

TOKENOMICS

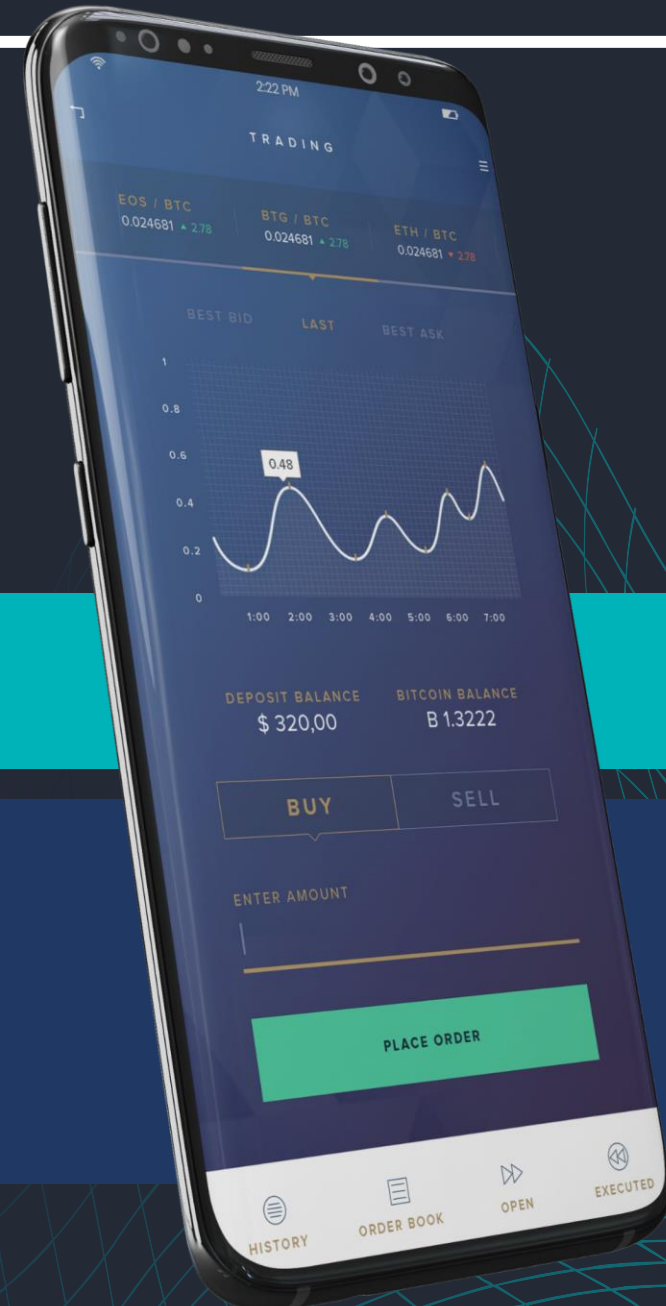


SET and GA are the two Gaia project tokens with GA being the Gas for SET

GA-SET ratio = 1:1

The first two trading pairs for the Second Earth Wallet:

SET/USDT GA/USDT



TOKENOMICS

SET TRANSFER

The maximum SET transferable amount equals the GA amount held by the user. When GA amount held by the user is less than the held SET amount, the maximum SET transfer amount is the total GA amount held by the user. If the user wants to continue transferring SET, they need to purchase the same amount of GA.



TOKENOMICS

POM TASK REWARD RULES

The SET income is calculated from the GDP obtained through data contributions (e.g. photo mining) and GDP share compared to the entire network.

SET locked up quantity = SET amount held by user – GA amount held by user (if you want to unlock SET, you need to obtain GA by purchase or fulfilling missions)

Note: If the user never purchases GA, the locked SET amount remains locked.

When the SET and GA circulations reach 10% of the total supply (51.01 million), Revival stage starts, with the personal mission system being activated, and the virtual shop ecosystem being launched.



SECOND EARTH: PARTNERS & ROADMAP



PARTNERS & SUPPORTERS



Jacob Rothschild, a wealthy Jewish businessman, decided to invest in the project



SpaceX announces that it will support the Ku and Ka interface data transfers for the Second Earth satellite aerial photography



Europe, Russia, and NASA open satellite call interfaces for testing the Second Earth Gaia Plan



23 global advertising companies signed contracts for future VR advertising in Gaia's VR travel business ecosystem



The world's first interactive virtual reality technology project to apply for the Guinness World Records with the highest latitude satellite system

PARTNERS & SUPPORTERS



HughesNet, the world's number one satellite communications network company, will provide the sixth-generation Internet protocol service for the Gaia project



The code submitted on the global open source code website GitHub exceeds 1 TB



The current SpaceX/Starlink graphics engineer Malcolm Denmark is serving as a graphics modeling consultant for the Gaia Project



The first batch of Starlink communication satellites is launched, 18.55-18.6 GHz, the elevation angle is 0 to 25 degrees, it is a synchronous and interactive frequency cooperation unit



Second Earth joins the FCC Federal Communications Satellite Commission's first batch of low-Earth satellite ecosystem members

PARTNERS & SUPPORTERS



ROADMAP

NOAH'S LANDING

- Global announcement
- Recruiting Explorers/Pioneers

2021

REVIVAL

- VR traveling ecosystem is launched globally
- The merchant system is launched
- The virtual reality interactive mission system is upgraded

2022

2020

RESHAPING

- Global real-world VR modeling data collection
- Blockchain incentive mechanism
- Photo mining
- Virtual reality interactive mission system

2021

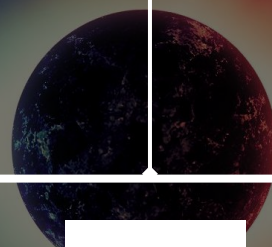
CONQUEST

- Gaia releases a massive multiplayer virtual reality game and the global players come online



ROADMAP

SECOND EARTH WILL BECOME THE WORLD'S LARGEST COMPANY FOR IMMERSIVE TRAVEL AND INTERACTIVE VR GAMES IN 2030. SECOND EARTH WILL REACH A GLOBAL COVERAGE BASED ON 5G AND STARLINK.



2030





SECOND EARTH

[GAIA PLAN]

***Explore unhindered by boundaries.
Virtually everything is possible!***

P L V S U L T R A